

# Bard Center for Entrepreneurship

**Mission / Vision:** The Bard Center provides all of the necessary resources to **build a successful business.** Our unique combination of experiential courses, scholarships, internships, access to mentors and alumni networks, on-site incubation and funding allow entrepreneurs to make their dreams become real.

## History

The Richard H. and Pamela S. Bard Center for Entrepreneurship was established in 1996 to foster economic development in Denver and the Rocky Mountain Region. Richard and Pamela Bard's generous endowment turned their dream into a reality, creating a program that prepares future leaders for success in any business venture.

As part of the Business School at the University of Colorado Denver, the Bard Center promotes entrepreneurship and innovation by advancing the teaching, study and practice of entrepreneurship, corporate and social innovation as well as new venture creation.

The Bard Center provides students with opportunities to create partnerships with the business community through academics, mentoring, and programs designed to foster innovation and entrepreneurial development.

**“An Entrepreneurial spirit can lead to the successful growth of any business or industry. The Bard Center helps students learn to create the spirit and helps businesses employ it.”**

*-Richard H. & Pamela S. Bard*



[www.business.cudenver.edu/bard](http://www.business.cudenver.edu/bard)

University of  
Colorado Denver  
**Business School**

**IDEAS  
IN  
ACTION**



**Bard Center for Entrepreneurship  
Business Incubator**

*Start & Grow Your Company with  
the Bard Center*

University of Colorado Denver  
Business School  
535 16th Street, Suite 300  
Denver, CO 80202  
Phone (303)620-4050 Fax (303)217-8064  
Bard.Center@UCDenver.edu

[www.business.cudenver.edu/bard](http://www.business.cudenver.edu/bard)

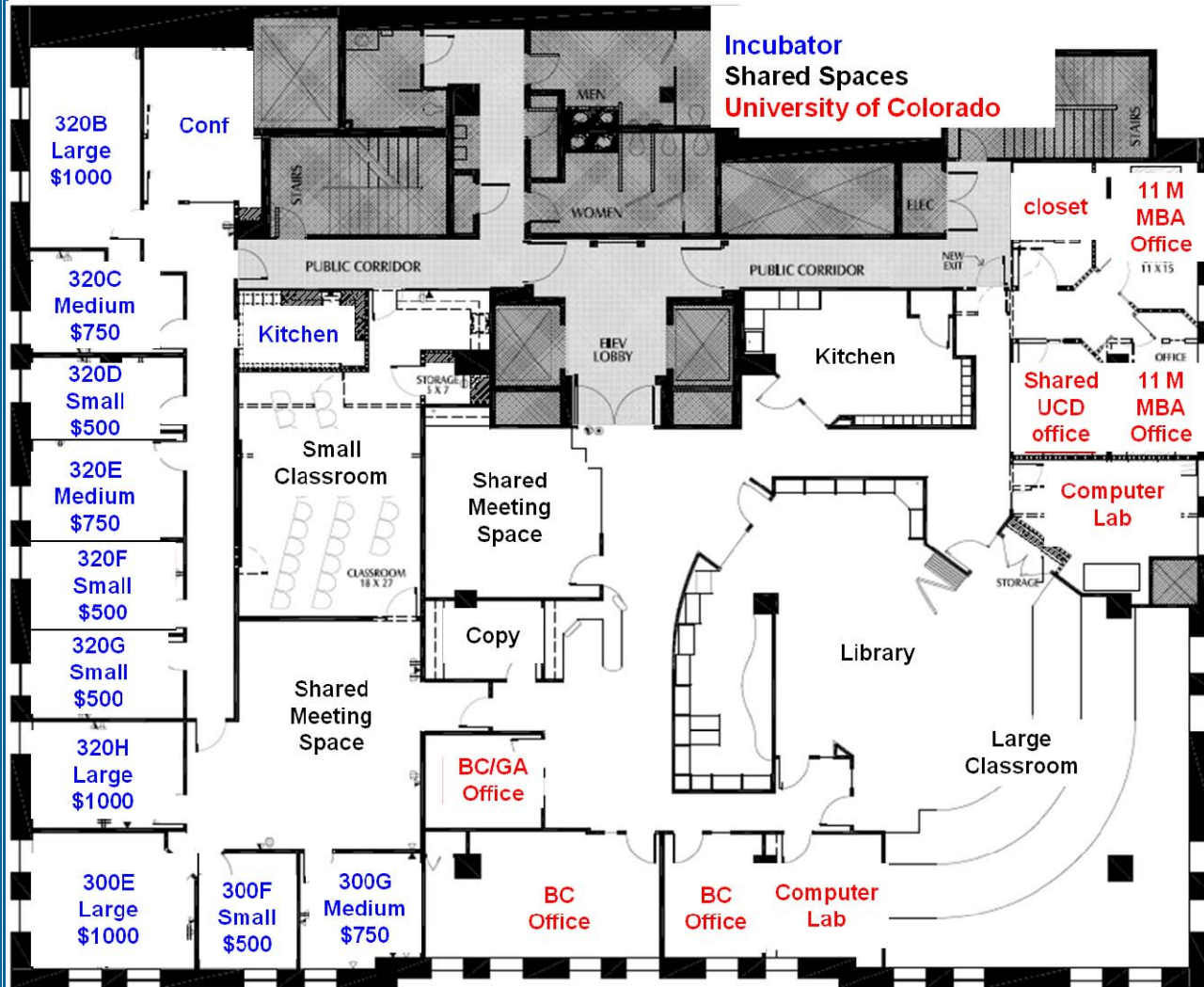
## Admission Criteria\*

- Executive Summary on Innovative Business Idea
- Growth strategy to exit incubator within 12 to 18 months
- Goals & objectives to execute strategy
- Successful interview(s) with Advisory Council member(s)

\*Preference given to University of Colorado (Faculty, Staff, Students, & Alumni) or Bard Center (e.g. Business Plan Winner) affiliates

## Incubation Process

- Matched to specific business mentor for optimal growth & success of the company
- Potential for meetings with mentors-in-residence for legal, accounting, public relations & other support as needed
- Quarterly updates on financial growth, progress and goals toward meeting milestones to Incubation & Mentorship Committee or Bard Center Advisory Council
- Access to Rutt Bridges VC Fund or Angel Investors in our community



## Office Amenities

- Furnished Offices
- Nightly Cleaning Service
- Private Kitchen & Meeting Room
- Moderate Fax/Copy Usage
- Wireless and Wired Internet Service

## Monthly Rental Rates

- Virtual - \$150 (mailing address, usage of shared spaces up to 10 hrs per month)
- Tiny - \$350
- Medium - \$750
- Small - \$500
- Large - \$1000

## Leases

- 6 months
- 12 months (10% discount)

## Contact Us

- Bard.Center@UCDenver.edu
- (303) 620-4050 ext 1